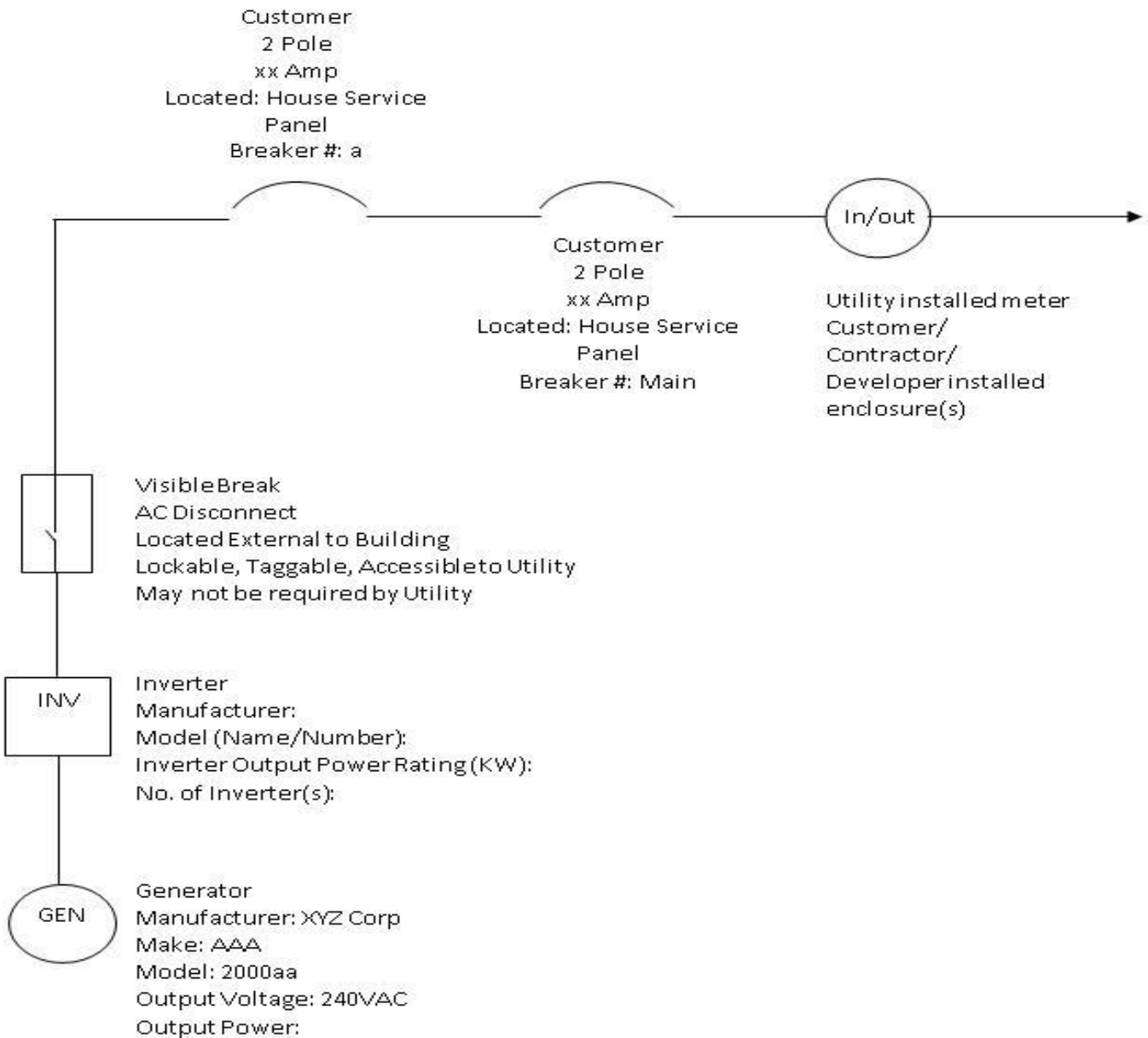
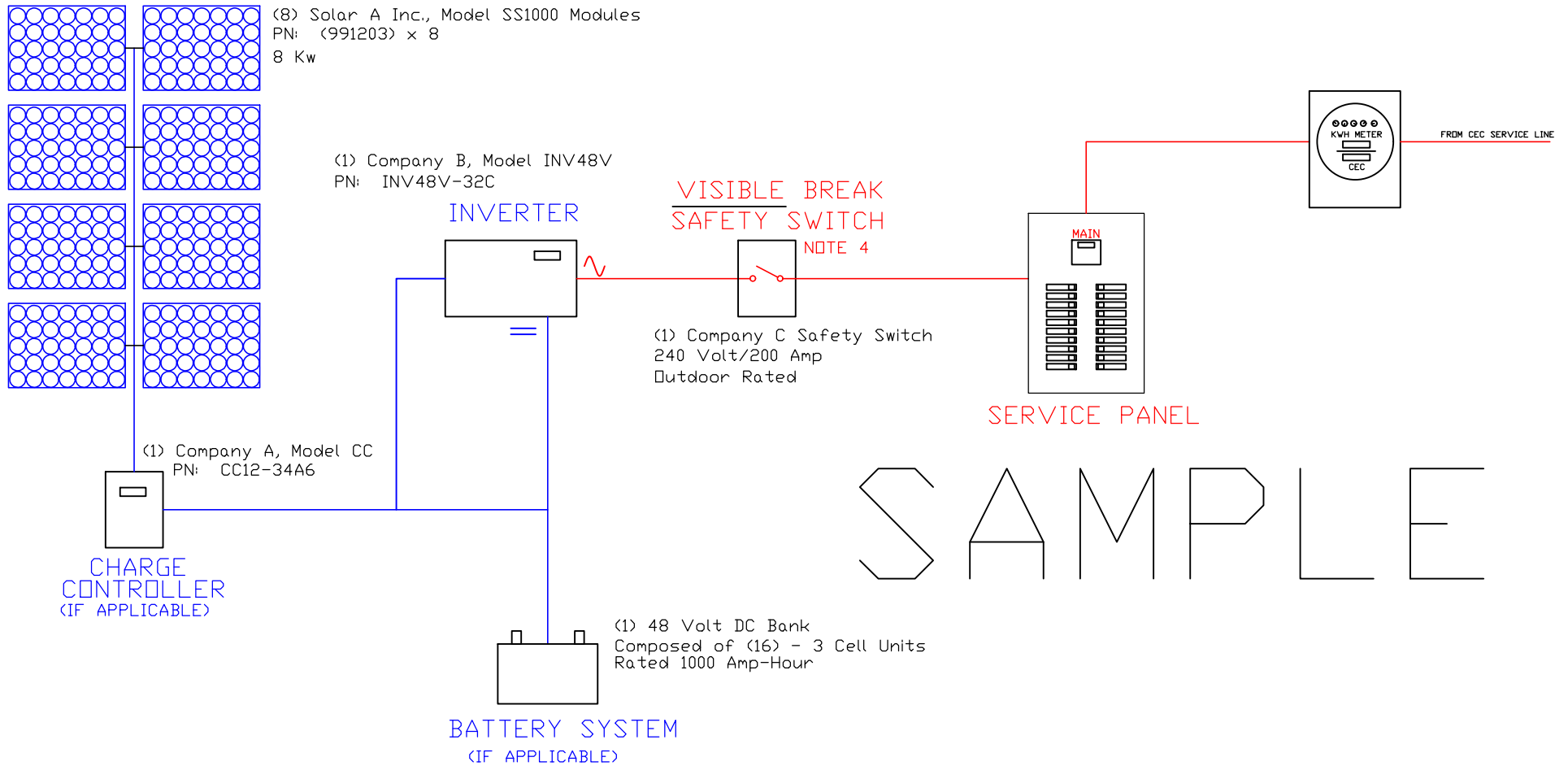


SAMPLE ONE-LINE DRAWING FOR NET METERING CATEGORY 1 PROJECTS

Note: Hand drawn One - Line Drawings are acceptable

Customer Name:	
Customer Address:	
Site Plan Prepared By:	
Date:	






NOTES:

1. ALL EQUIPMENT FURNISHED BY CUSTOMER EXCLUDING CEC BILLING METER
2. PANEL(S), INVERTER, CHARGE CONTROLLER, & BATTERY SYSTEM CONFIGURATION VARIES DEPENDANT UPON INSTALLATION TYPE - CUSTOMER FURNISHED EQUIPMENT
3. CUSTOMER SYSTEM AND EQUIPMENT MUST COMPLY WITH IEEE 1547 PER IEEE 1547.1 TESTING DOCUMENT NUMBER 123.4 UL
4. VISABLE BREAKER MUST BE MOUNTED EXTERIOR TO ANY BUILDING/ENCLOSURE, , ACCESSIBLE AND LOCKABLE BY CEC EMPLOYEES. LOCATED WITHIN 10' OF CEC METER
5. ALL NEC AND NESC APPLY
6. INSTALLATION MUST BE APPROVED BY STATE OR LOCAL ELECTRICAL AUTHORITY

CATEGORY 1

												DRAWING TITLE BLOCK DIAGRAM SOLAR GENERATION & INTERCONNECT LESS THAN 20 KW SYSTEM	
B	5/30/15	CEC REVISIONS		GEM	---							DRAWN BY: BL DATE: 07/28/08 SCALE: NTS	
A	1/12/11	CEC REVISIONS		BL	CFL							CHECKED BY: BL DATE: 07/28/08 DRAWING NO.	
	05/01/09	FOR RELEASE		BL	CFL							APPROVED BY: CFL DATE: 05/01/09	
REV.	DATE	DESCRIPTION		BY	APP.							AE-101	

TURBINE 1

<7> Wind A Inc., Model WT1200 Turbines
PN: <WT12700> x 7

TURBINE n

<1> Company B, Model INV48V
PN: INV48V-32C
INVERTER
<IF APPLICABLE>

**VISIBLE BREAK
SAFETY SWITCH**
NOTE 4

<1> Company C Safety Switch
240 Volt/200 Amp
Outdoor Rated

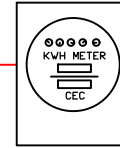
SERVICE PANEL

CHARGE CONTROLLER
<IF APPLICABLE>

<1> Company A, Model CC1234
PN: CC12-34A6

<1> 48 Volt DC Bank
Composed of <16> - 3 Cell Units
Rated 1000 Amp-Hour

BATTERY SYSTEM
<IF APPLICABLE>




FROM CEC SERVICE LINE

S A M P L E

NOTES:

1. ALL EQUIPMENT FURNISHED BY CUSTOMER EXCLUDING CEC BILLING METER
2. TURBINE(S), INVERTER, CHARGE CONTROLLER, & BATTERY SYSTEM CONFIGURATION VARIES DEPENDANT UPON INSTALLATION TYPE - CUSTOMER FURNISHED EQUIPMENT
3. CUSTOMER SYSTEM AND EQUIPMENT MUST COMPLY WITH IEEE 1547 PER IEEE 1547.1 TESTING DOCUMENT NUMBER 123.4 UL
4. VISABLE BREAK MUST BE MOUNTED EXTERIOR TO ANY BUILDING/ENCLOSURE, ACCESSIBLE, AND LOCKABLE BY CEC EMPLOYEES. LOCATED WITHIN 10' OF CEC METER
5. ALL NEC AND NESC APPLY
6. INSTALLATION MUST BE APPROVED BY STATE OR LOCAL ELECTRICAL AUTHORITY

CATEGORY 1

												BLOCK DIAGRAM WIND GENERATION & INTERCONNECT LESS THAN 20 KW SYSTEM	
B	5/30/15	CEC REVISIONS		SEM	--			DRAWN BY BL	DATE 07/28/08	SCALE NTS			
A	1/12/11	CEC REVISIONS		BL	CFL			CHECKED BL	DATE 07/28/08	DRAWING NO. 			
	05/01/09	FOR RELEASE		BL	CFL			APPROVED CFL	DATE 05/01/09				AE-100
REV.	DATE	DESCRIPTION		BY	APP.								